



Big Data Technology



HEAD


Lunachevskaya
Anna

CEO

TYPE OF BUSINESS

System Integration
Personal Accounts Design and Development
Cloud Storage Solutions
Cloud Infrastructure Architecture
Custom Software Development

CONTACT DETAILS

Russia, Moscow,
Innovation Center Skolkovo
Bolshoy Bulvar 42 bld 1
Email: sales@asdtech.co
Telephone: +7 499 995 0533

POTENTIAL PARTNERS

System Integrators
Telecommunication Carriers
Internet Service Providers
Banks and Financial Institutions
Retail Chains
E-commerce

INTERNATIONAL BUSINESS MANAGER

Dmitry
Malin

+7 499 995 0533
dmitry.malin@gmail.com

KEY FACTS

ASD Technologies - a team of experts with over 10 years of experience of developing personal accounts / self-service portals for Fintech, Telecom carriers and Service providers. We have successfully implemented over a 100 IT projects for such companies as Vodafone, Beeline, LG, Rostelecom and VTB to name a few.

Institutional-legal form: LLC
Year of foundation: 2009
Number of Employees: 70 employees

GENERAL INFORMATION

ASD Technologies - a team of experts with over 10 years of experience of developing personal accounts / self-service portals for Fintech, Telecom carriers and Service providers. We have successfully implemented over a 100 IT projects for such companies as Vodafone, Beeline, LG, Rostelecom and VTB to name a few.
KEY TECHNOLOGY COMPETENCES Development of personal accounts / self-service portals, personal and Business cloud storage solutions for Telecom Carriers and Enterprises. Full-cycle custom software development including UX/UI design, Business Analysis and Cloud infrastructure engineering in compliance with top security standards.

IMPLEMENTED PROJECTS; ASD Technologies have successfully implemented over a hundred of very sophisticated projects globally in the field of cloud storage, personal accounts / self-service portals for telecom carriers, banks and service providers in general.

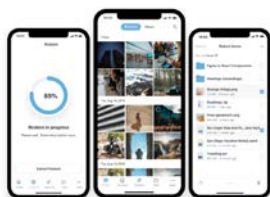
KEY PARTNERS; AWS, LG, SBER, Vodafone, Beeline, Megafon, Telkomsel, HH, Rostelecom, Nexon, VTB
PRODUCTION FACILITIES; ASD Technologies is over a 60 engineers strong company which are mainly located in Moscow, Skolkovo and Nizhny Novgorod offices.

EXPORT GEOGRAPHY

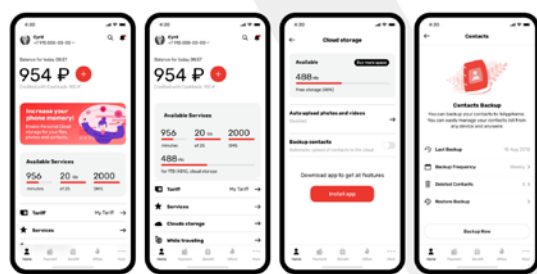
Israel, UK, S. Korea, Indonesia, Turkey, Mexico

FEATURED PRODUCTS
WHAT IS CLOUDIKE?


- White-label better equivalent of:
 - Dropbox
 - Google Drive
 - Apple iCloud
 - Microsoft OneDrive
- Key functions are similar to branded service
- Telecom-grade security and reliability



Personal and Business Cloud Storage for Telecom Carriers, ISPs, OEMs and Enterprises



Personal account spaces / Self-service portals for Service Providers



HEAD



Oleg
Bosenko

Founder & CEO

TYPE OF BUSINESS

Data Analysis
Big Data
Business Modeling
No-Code Development
Management Consulting

CONTACT DETAILS

111141, Moscow,
7 Plehanova St, off 41
Tel.: +7 (495) 127-73-20,
+7 (916) 815-34-99
E-mail: info@axilon.ru

POTENTIAL PARTNERS

- 1) Software development and solution integrator companies and associations of such companies.
- 2) Infrastructure and Industrial companies and associations of such companies.
- 3) Commercial companies from any industry

INTERNATIONAL BUSINESS MANAGER

Konstantin
Bichev
Partnership Manager
+7 (916) 220-72-14
kbichev@axilon.ru

KEY FACTS

Software platforms, products and solutions development. Management consulting. Corporate business modeling.
Best practice in success solutions after other teams failure attempts.

Institutional-legal form: LLC
Year of foundation: 2004
Net Sales: \$0,6 million (2020)
Number of Employees: 16 employees

GENERAL INFORMATION

Founded as IT department of management consulting company in 2004.
Decision of development own platform in 2006 and separating from mother company.
Development Cubix BM (vers.1 - MS SQL + .NET) 2008... and analytic system solutions in it.
Adding Multilanguage support to Cubix BM 2020-2021
Development Cubix BM (vers.2 - any SQL + Python + React JS + ...) 2018...
Solutions in Infrastructure, Trade and E-Trade, Transport, Industrial, Construction and other companies 2009...

Partners: Lanit, Iteco

Features: No-code, BPM-CMP class, In-memory high performance own engine, self-support solutions.
Best Usages:

- 1) very frequent changes in basic analytics and reports - when analytical space is really a data.
- 2) Online all-in-one control (input, consolidation, reports, workflow, dataflow, BI) in one product.
- 3) Central communicator with different data sources like "a" from ERP, "b" from CAD, "c" need to input and "d"= $\text{sum}(a)*b+c$, and d to BI dashboard

EXPORT GEOGRAPHY

Only Russian branches of International companies

FITURED PRODUCTS

Tools CUBIX BM

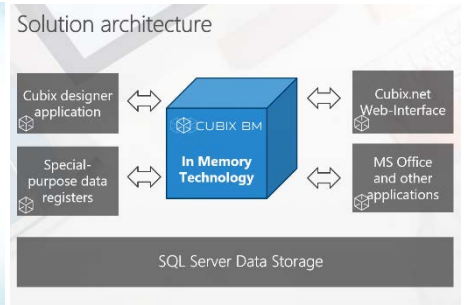
- Multuser web-portal
- Business process management (Work Flow)
- Multidimensional analytical tables and hierarchical analytics
- Generation of various analytical reports by using visual tools
- Usage of various external data sources
- Reports templates setting

Features of Cubix BM Platform

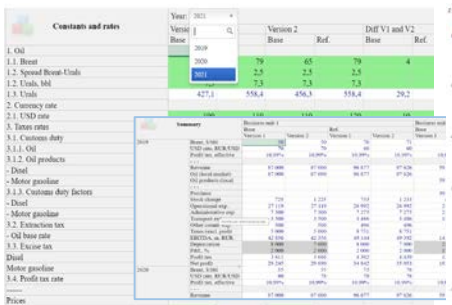
Cubix BM: Solutions for Industry Verticals

- Infrastructure companies and municipal government
- Business enterprises: FMCG and other
- Banks and financial companies
- Retail and distribution
- Logistics and transportation
- Telecommunication and IT companies
- Other business segments

Industries with relevant working and demo models in Cubix BM



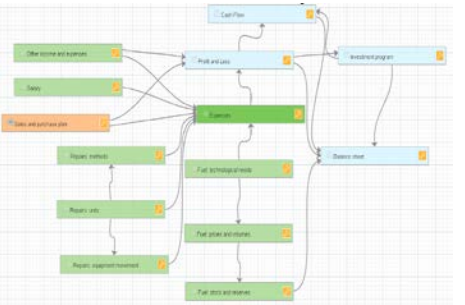
Cubix BM based solution components



Workspace example



Graph example



Data Flow Scheme example



BRAIN SYSTEMS

BrainSystems Group

www.brainsystemsgroup.com

HEAD



Andrei Iakovlev
Founder & CEO

TYPE OF BUSINESS

e-Healthcare software, hardware and services for doctors, patients and regulators.
Medical data processing.
Applied math for healthcare.
Mobile and distributed healthcare.
Intergovernmental telemedicine.

CONTACT DETAILS

197343, Russia, Saint Petersburg,
st. Sailor Zheleznyaka 57A-129H
8-800-5553107
zakupki@brainsystems.ru

POTENTIAL PARTNERS

Public and private hospitals
Ministry of Health, e-health departments
Medical science institutes
Local representatives companies

INTERNATIONAL BUSINESS MANAGER

Andrei Iakovlev
CEO
8-800-5553107
zakupki@brainsystems.ru

KEY FACTS

Year of foundation: 2008
Legal form: Group of LLCs
Trademark in healthcare: MedSphere
Number of LOC: over 220mln
Number of medical records gathered: over 1bln

Brain Systems Group is working towards adapting their products for other countries regulations.

We invite interested local companies and individuals to partnership and technology transfer cooperation.

EXPORT GEOGRAPHY

EAEU, ASEAN, South Africa, Syria

GENERAL INFORMATION

- For over 13 years, Brain Systems Group has been implementing cutting the edge applied scientific solutions in healthcare, including public, private, military and aerospace specialties.
- Brain Systems Group has established long-term relations with leading scientific institutes, specialized organizations and state-run bodies, which provide methodological and expert support in all healthcare solutions, as well as product validation and certification.
- Our hardware solutions includes Russian computers for doctors including all necessary software out of the box, tech-severs for medical devices interaction and high-performance servers for data processing - **EVERYTHING YOU NEED FOR DIGITAL HEALTHCARE BY VERY COMPETITIVE PRICE.**
- Intergovernmental telemedicine platform for wide range of consultation services of leading Russian medical institutes, professors who are always available online for helping in complex decisions.
- Medical data processing and applied math solutions for healthcare processes monitoring, optimization and support of decision making.

FITURED PRODUCTS



Digital e-healthcare platform MedSphere.
All You need for hospital out of the box.
Hardware, software, services, innovations, medical data processing, applied math for safety, convenience, optimization and support of best decision making.



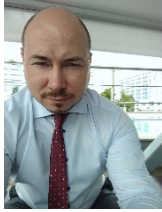
Intergovernmental telemedicine and e-healthcare.
Best clinical practices of Russian medicine.
Wide range of regulations for quality & efficiency.
Applied math for on-the-fly decisions and optimal management.



E-healthcare for
— hospitals of Ministry of Health
— private hospitals and medical businesses

E-healthcare for special applications like
— hospitals of Ministry of Defense
— hospitals of Ministry of Public Security
— aerospace medicine

HEAD



Konstantine Chernykh

CEO

TYPE OF BUSINESS

CAE FIDESYS is an engineering software company. We develop next-generation universal software for high-end structural analysis using a new generation numerical method

CONTACT DETAILS

115114, Moscow,
5 Letnikovskaya str

Tel.: +7 (495) 177 - 36 - 18,
E-mail: contact@cae-fidesys.com

POTENTIAL PARTNERS

Oil & Gas sector
Mining company
Civil engineering
Machine building
Manufactures
Aerospace

INTERNATIONAL BUSINESS MANAGER

Olga
Lukinova
Chief Business Development officer

o.lukinova@cae-fidesys.com

KEY FACTS

CAE Fidesys focusing on work in the field of digital design and simulation, computer aided engineering, research and development in the interests of global high-tech industry.

Fidesys LLC is an engineering software company based in Moscow Russia with offices at New Jersey USA, founded in 2009 as a research group of Moscow State University.

CAE Fidesys develops next generation universal software for high-end structural analysis using a new generation of numerical methods.

CAE Fidesys is verified according to the NAFEMS standards.

EXPORT GEOGRAPHY

Malasya, Germany, Italy, Latin America, China, UAE

GENERAL INFORMATION

Fidesys LLC is an engineering software company with offices in Moscow, Russia and NJ, USA, founded in 2009 as a research group of Lomonosov Moscow State University.

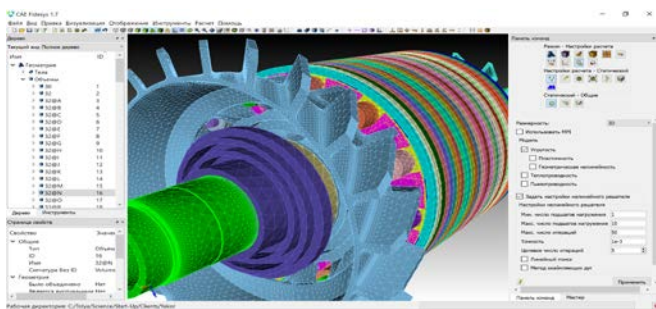
Fidesys LLC develops the next-gen universal software for high-end structural analysis (CAE, computer-aided engineering) using a new generation of numerical methods.

CAE Fidesys is already used in mechanical engineering, mining, oil and gas industries.

TECHNOLOGICAL EXPERTISE OF THE COMPANY: precise math modeling for structural analysis and related engineering fields. 25 programmers-mathematicians (postgraduates, PhDs and masters from the top Russian universities*). 11 consulting professors, working in the Russian Academy of Sciences, Columbia University, University of New Hampshire and Iowa State University. Management, sales and marketing specialists with extensive experience in various technical fields and international background. Board of directors incl. top-managers of IT industry (former VPs of PTC CIS, Autodesk CIS)

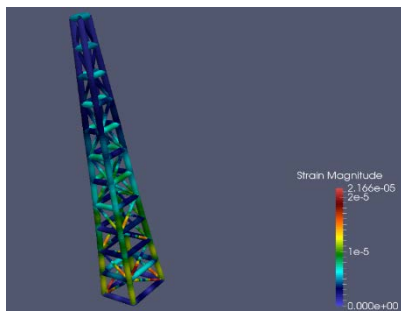
REALIZED PROJECTS. The company successfully realized hundreds of projects

FITURED PRODUCTS

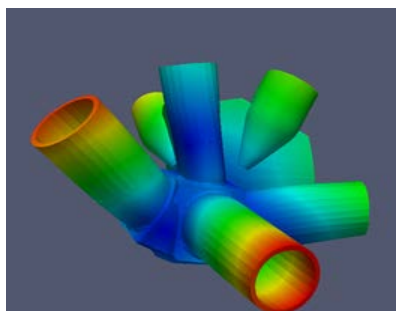


CAE Fidesys desktop

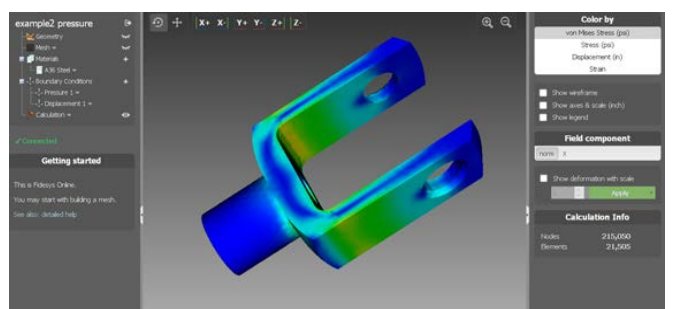
Solving linear problems of elasticity, plane stress and plane strains problems, 3D static and dynamic analysis



Strength analysis for elastoplastic materials% Mises, DrukerPrager
Thermal conductivity

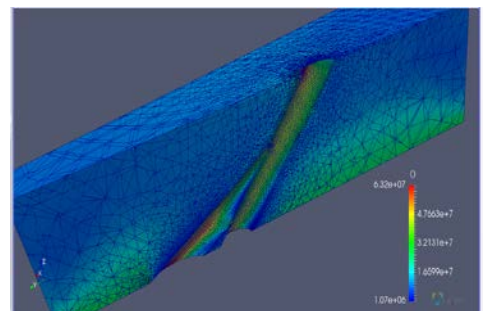


Support for nonconformal meshes with gap/overlaps between contacting bodies



Sim4Design - SaaS solution

Sim4Design cloud based solution, simplified engineering analysis for smarter design decisions, pay as you go.



Localization of elastoplastic stress
Geophysics & Geomechanics cases

HEAD



Natalia Molchanova
President and CEO

TYPE OF BUSINESS

Datasets & language data for Artificial Intelligence and Machine Learning

Processing of unstructured data to generate high-quality datasets and get clients' AI/ML systems to new performance level

POTENTIAL PARTNERS

Companies of any branch with extensive volume of incoming unstructured data to be used for AI/ML
AI/ML specialized companies

CONTACT DETAILS

191023, St.Petersburg, 2 Muchnoy Pereulok, Russia
Tel.:+7 (812) 200-43-00
Fax.:+7 (812) 200-43-00
E-mail: egotech@egotranslating.ru

INTERNATIONAL BUSINESS MANAGER

Evgenia Gorodetskaya
VP Technology & Development
evgenia.gorodetskaya@egotranslating.ru
+7 800 100 2210

KEY FACTS

The leader on the linguistic market of Russia, one of top three linguistic services' providers of Eastern Europe.

Ensures a comprehensive range of services in data management, localization, translation & interpreting into 100+ world languages.

Institutional-legal form: Limited Liability Company
Year of foundation: 1990

GENERAL INFORMATION

Over 30 years of leadership in the language industry and more than a decade of inhouse software and technological development makes EGO Translating Company a reliable Language Data vendor as well as Data Quality Enhancement services provider.

TECHNOLOGICAL EXPERTISE OF THE COMPANY. Our inhouse developed NLP toolkit provides clients with unique software solutions for language analysis and data processing: clustering, stemming, tokenization, morphological analysis, parsing and much more.

PARTNERS AND CUSTOMERS. EGO Translating has got more than 12,000 clients and partners in various industries and government bodies.

PRODUCTION FACILITIES. 250+ inhouse team members, large freelancer base and global crowdsourcing capabilities multiplied by extensive expertise with 350+ specialized glossaries on different topics.

EXPORT GEOGRAPHY

30+ countries worldwide: France, Spain, Italy, Sweden, Germany, Japan, Poland, Netherlands, Switzerland, UAE, Belarus, Kazakhstan, USA, UK, Greece, Turkey, Norway, Singapore

FITURED PRODUCTS



Collecting datasets for ML:

- texts : monolingual/multilingual, rare language , domain-oriented;
- speech: automatic speech recognition systems, chatbots, TTS, special scenarios;
- images: for the image recognition systems training.

Datasets quality evaluation, quality assurance, testing:

- datasets quality evaluation;
- QA and QE metrics implication for the evaluation of machine translation;
- ML solutions testing.

Processing clients' datasets :

- texts – cleaning, linguistic analysis, clustering, enrichment, etc;
- speech – recognition, cleaning, clustering, transcription, etc;
- images – classification, object detection, cleaning.

HEAD



VADIM
ANDREEV
CEO

TYPE OF BUSINESS

Multiseat Windows software developers

CONTACT DETAILS

109428, Moskva, Ryazanskiy pr-t, d.22, korp.2,
et.8, pom. XIV, k.37
+7 977-261-16-68
director@ibik.ru

POTENTIAL PARTNERS

Government, banks, corporations, industrial enterprises, education organizations, medical and pharmaceutical companies.

INTERNATIONAL BUSINESS MANAGER

IGOR
NOGTEV
Commercial Director
+7 903 724-06-22
igor.nogtev@ibiksoft.com

KEY FACTS

IBIK LLC was founded in 2003. IBIK has a team of highly qualified programmers who create software that is known all over the world. Company has distributed team in Russia, Poland, Nepal, India and Brazil.

The company works with partners around the world: LIGS Informatics (India), Portware (South Korea), Liberty and Technology (France), Stable Computer Inc. (Taiwan) and others. Company has over 60 dealers all over the world.

EXPORT GEOGRAPHY

Almost all countries

GENERAL INFORMATION

IBIK is the leading Russian developer of Multiseat IT solution called ASTER. ASTER software allows creating multiple workplaces based on a single Windows PC. ASTER is useful for government clients, corporate clients and individuals:

- One of the TOP-5 Multiseat companies globally
 - More than 20 years of experience of Multiseat software development
 - Hundreds of corporate clients all over the world, some of them: Russia Post, Bancofie Bank (Bolivia), RosAtom, Goertek (China), Aixtron (Germany), LNT (France)
- Unique R&D team and state-of-the-art technology:
- Multiseat IT infrastructure saves budgets on HW purchasing and on electricity
 - ASTER won several international best SW awards for quality and usability (PC Magazine, Chip)
 - ASTER saves energy, reduces e-waste and mining

FITURED PRODUCTS



ASTER PRO-2

•This is a lifetime license for installation on Microsoft Windows 7/8/10/11



- The license allows organizing 2 workplaces based on 1 PC
- Number of workplaces could not be expanded
- It is possible to port the license to another PC

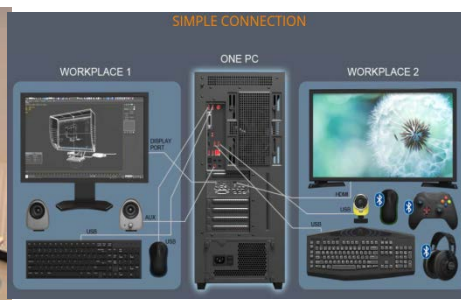


- Less expenses on HW and SW
- Less electrical power consumption
- More space
- More entertainment



ASTER PRO-6

•This is a lifetime license for installation on Microsoft Windows 7/8/10/11 and Windows Server 2016/2019/2022



- The license allows organizing up to 6 workplaces based on 1 PC
- Number of workplaces could be expanded up to 12 workplaces
- It is possible to port the license to another PC



- Less TCO (Total Cost of Ownership)
- Less electrical power consumption
- Less recycling
- Less noise

MORE INFO [Promo video](#)

HEAD



Grigory Shevchenko
CEO

TYPE OF BUSINESS

Big data
Machine learning
Artificial intelligence

CONTACT DETAILS

26 Stremyanni Lane
Moscow
115054
Russia

Tel.: +7 967 004-55-22
E-mail: info@isgneuro.com

INTERNATIONAL BUSINESS MANAGER

Vladimir Statut
International business manager
+7 911 924-37-73
vladimir@isgneuro.com

POTENTIAL PARTNERS

Oil and gas
Logistics
Sports/medicine
Financial structures
Government agencies
Retail

KEY FACTS

ISG Neuro was created by a team of experts from Open Technologies group of companies - Russian system integrator with more than 25 years of experience on the IT market. The company has developed its own platform for storing, processing and big data analytics. Expansion of partner's network and expert community are the prior tasks to our company. The signature feature of our team is passion for machine learning technologies that unites practitioners from huge number of areas. There are 62 of us and we are ready to offer out-of-the box solutions for your tasks. Our implementations successfully compete with the market leaders.

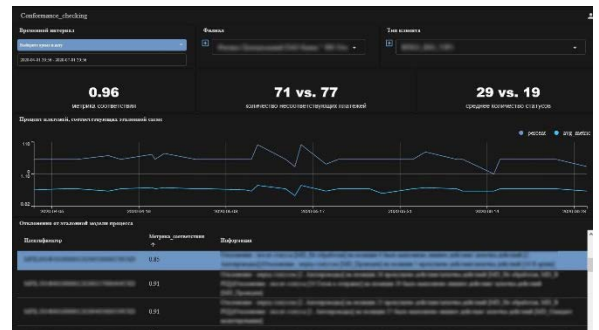
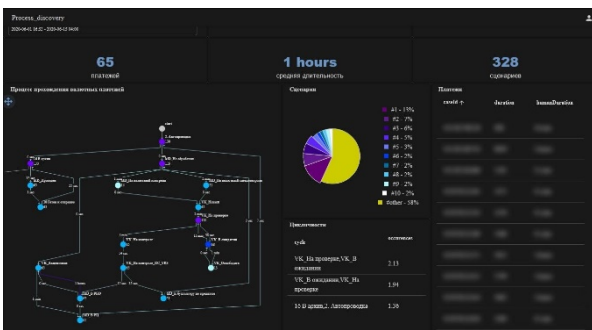
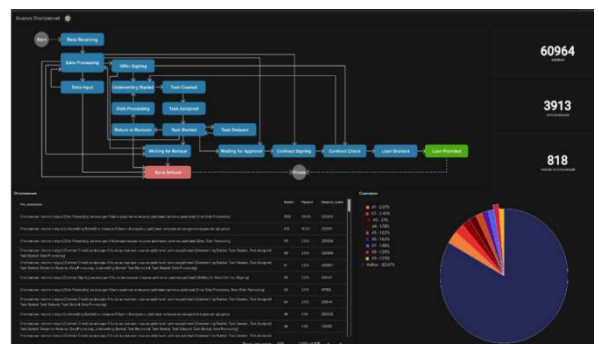
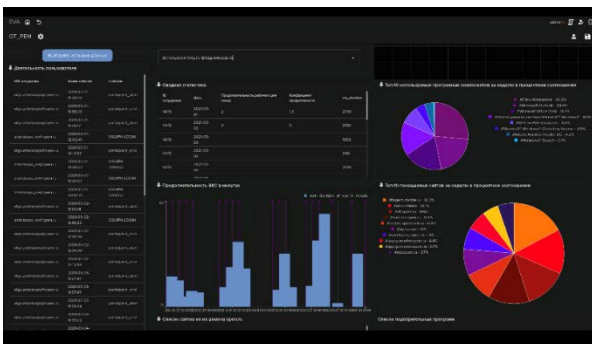
EXPORT GEOGRAPHY

Worldwide

GENERAL INFORMATION

Our main products are OT.Platform and simplified modeling language - SMA.LL. They are designed in order to reduce barriers to machine learning for experts from different subject areas so that they could apply the power of BD and ML in their industries. We don't sell any software, it's completely free. Everyone is welcome to perform research or develop their own products on top of our analytic open source OT.Platform. Commercial applications are marketed as a way to reduce our customer's and partner's time for specific functionality self-development. Our commercial products are:
Business Process Mining (OT.BPM) - reconstruction of business processes following the traces in information systems.
Automated Capacity Management System (OT.ACMS) - powerful predictions of computing resources.
Intelligent Accident Prevention System (OT.IAPS) - the predictive analytics system.
Personal Efficiency Management (OT.PEM) - detailed control over the performance of employees and better understanding of workflows.
Neuromask - smart mask equipped with 14 sensors + BeHealthy App with predictive real-time analytics which determines the body potential and evaluates training efficiency and safety on its basis. At the moment the company successfully implements projects with market leaders in vast number of industries. Check out our websites for the detailed information on other products of ISG Neuro company.

FEATURED PRODUCTS



HEAD



Sergei Shestakov

CEO

TYPE OF BUSINESS

*Data-centric analytical solutions,
Embedded analytics,
Big Data analytics,
Data visualization,
AI/ML*

CONTACT DETAILS

*191119, St Petersburg,
Konstantina Zaslouva str., 7
Tel.: +7 (812) 974-74-03
E-mail: sales@luxmsbi.com*

POTENTIAL PARTNERS

*Transport & Logistics companies
Healthcare organizations
Oil & Gas companies
Public corporations
Finance*

INTERNATIONAL BUSINESS MANAGER

*Sergei Shestakov
CEO, International business manager
E-mail: sales@luxmsbi.com*

KEY FACTS

Luxms Group is a one-stop vendor for complex analytical solutions - business intelligence leveraging datacentric architecture and MPP (massively parallel processing), data visualization, streaming analytics, Industrial Internet of Things, big data management.

Year of foundation: 2005

Revenue : \$1,57 million

Number of Employees: 55+ employees

GENERAL INFORMATION

Featured Products: Luxms BI, fast analytics on big data

Luxms BI success stories:

RosTelecom, Russia's #1 telco national operator (42.3 million subscribers)

MegaFon, Russia's top 3 largest mobile operator (76.9 million subscribers)

RZD, Russian Railway Carrier - #1 national transportation company (1 million employees)

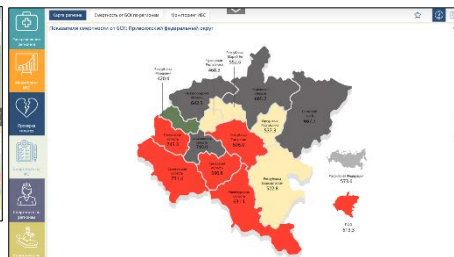
Our partners: KORUS Consulting, CROC, GlowByte Consulting, Media-tel, IT.Philosophy

Features: near real-time streaming analytics, in-memory processing with MPP data storage, unlimited scalability, solution flexibility, excellent TCO

FEATURED PRODUCTS



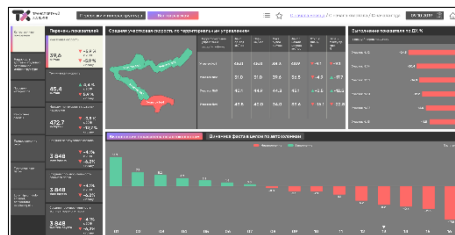
Dashboard for the large telecom company



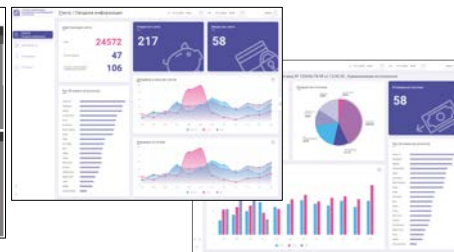
Dashboard for healthcare analytics



Dashboard for the large telecom company



Dashboard for the biggest European transport & logistics company



Dashboards for the financial sector



Dashboard for the oil & gas corporation

HEAD



Sergey
Khudyakov

President and Founder

TYPE OF BUSINESS

Artificial intelligence
Big data analysis
Healthcare

CONTACT DETAILS

125167, Moscow, Russia
Leningradskiy prospect 36b40, of 229

Tel.: +7 (495) 147 26 27
E-mail: info@mainslab.ee

POTENTIAL PARTNERS

Insurance companies, Assistance companies,
Auto fleet managers, Carsharing, Clinics, Banks,
Leasing companies

INTERNATIONAL BUSINESS MANAGER

Pavel
Ozerov
International business manager
+7 926 5575932
Pavel.Ozerov@mainslab.ee

KEY FACTS

Ai developer focusing on insurance industry. We aim building efficient highly technological processes to make monetary and emotional effect for Enterprises and its customers.

Institutional-legal form: joint stock company
Year of foundation: 2018
Offices: Moscow and Tallinn

GENERAL INFORMATION

Mains Lab is a focused AI developer for Insurance industry. We have a successful story on the Russian market working with Top-10 Insurers, including international players like Allianz, Generali. Meanwhile developing further portfolio with 2-tier players.

By inventing plug-and-play solutions we help insurance players to build efficient and error-free processes. Mains Lab is a part of Skolkovo - Russian leading innovation cluster. Our products were highly appreciated by the State and supported by grant.

Our team consists of brilliant IT developers and programmers backed by experts from medical, automotive and insurance industries.

We are highly oriented on quality and offer our clients an accuracy rate of 98% which proves our solutions trustworthy.

Our projects are easy to test, and we welcome insurance players on board.

EXPORT GEOGRAPHY

Europe, MENA, Asia, Americas, Australia

FITURED PRODUCTS



Health anomalies detection

Product helps working through excessive claims via machine learning solution to reduce claims payouts up to 4.5%. The software helps to identify suspicious services that should not have been provided along with given diagnosis or under medical standards or according to Insurance company rules.

We adhere to the combined approach of using A) 1100+ imbodyed rules and B)neural network to identify wrong treatment, overtreatment and excessive payouts.

Damage recognition and calculation

To shorten this customer journey, provide Wow-effect and save money on claim (discounted payment because of faster payout + saving on expert FTE) we designed and AI technology which recognizes damages by photo, understands what needs to be done with the spare part, forecast hidden damages and make a full claim report.

Two very important things to mention:

- a) all our calculations are verified by certified motor expert. This is how we reached accuracy of 98%;
- b) you do not need to install our solution. All the results are uploaded into Audatex, Silverdat or any other software your experts are used to

Clinicians assistant and check

ClinRec by Mains Lab formulates medical cases based on previous services and presumptive diagnosis and highlights excessive or missing services according to international and local medical guidelines providing a link to a relevant standards description regularly curated by clinical professionals including clinical content for specialty population

ClinRec by Mains Lab helps to rethink outpatient workflow, standardize quality and increase efficiency of clinicians and clinics

HEAD



**VICTOR
CHERNOV**

Founder & CEO

TYPE OF BUSINESS

- High-Performance Database development
- Data management, analysis, consulting
- Information Systems development
- Artificial Intelligence Software
- Maintenance & Support

CONTACT DETAILS

143026, Moscow, Bolshoy Blvd. 42, bld. 1, office 336
 +7(985)999-2243
 +7(495)101-4324
info@nitrosbase.com

POTENTIAL PARTNERS

Commercial companies from any industry or government organizations willing to excel in their data management and performance.

INTERNATIONAL BUSINESS MANAGER

Andrey Portnov, CFO
 +7(985)767-1556
aportnov@nitrosbase.com

KEY FACTS

The team of data management experts. We provide a full range of services for design, implementation, audit and maintenance of large high-load information systems.

Year of foundation: 2013

Legal form: LLC

Implemented projects: more than 60

Team: more than 20 specialists

GENERAL INFORMATION

NitrosData is a team of data management experts. Our professionalism and qualifications allow us to implement complex large-scale projects, create unique solutions that provide a competitive advantage for the customer's business.

Our expertise includes information system development, application and service Integration, optimization of systems operating under heavy loads and high data volumes, database query optimization, database acceleration.

We help corporations, companies and startups in research, design and development of intelligent real-time software to optimize their businesses using our unique data processing technology.

Our partners:

Supergraph (Netherlands), IT.Philosophy, ProgramBank

Our customers:

Uponor, Ministry of Health of Russian Federation, Theatre de Carouge, Sechenov University.

EXPORT GEOGRAPHY

United States, Germany, Netherlands, Switzerland, France, Malaysia, India.

FEATURED PRODUCTS



NITROSBASE SQL - high-performance relational database: SQL, transactions, reliability, scalability, etc.



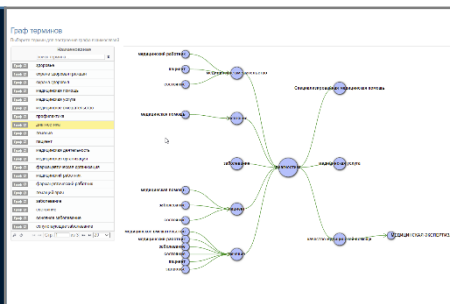
NITROSBASE MULTIMODEL - high-performance universal database: SQL, graph and document data; reliability, scalability, etc.



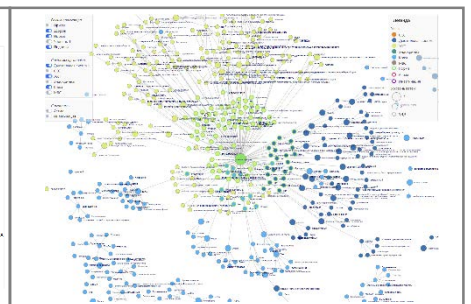
NITROSBASE RDF - high-performance graph database: based on W3C semantic standards; Innovative data processing capabilities



NITROSBASE INMEMORY - extremely high-performance data processing library, In-Memory database



LEXSCRIPTA - thesaurus normalization system for legislative and regulatory document archives; concept space normalization system.



VIRTUAL PATIENT - the training simulator system for remote study of clinical pediatrics

HEAD



*Pashkevich
Andrey*

Founder and CEO

TYPE OF BUSINESS

Data Analytics / Big Data / Legal tech
Artificial intelligence

CONTACT DETAILS

Bld. 4-1, office 60, str. Studenyy proezd, Moscow, Russia

*Tel :+7 (495) 128-65-45,
E-mail: ap@urrobot.net*

POTENTIAL PARTNERS

*Resource supplying organizations Management
companies Banks, credit organizations Toll roads,
parking*

INTERNATIONAL BUSINESS MANAGER

*Andrey
Pashkevich
President and CEO
+7 968 956-53-04
ap@urrobot.net*

KEY FACTS

RoboClaim specializes in Legal Tech. We have developed a cloud platform for processing and filing electronic documents using artificial intelligence and machine learning.

*Institutional-legal form: LLC
RoboClaim Capital Stock: \$ 140
Net Sales (Consolidated) \$100 000 (year, 2020)*

GENERAL INFORMATION

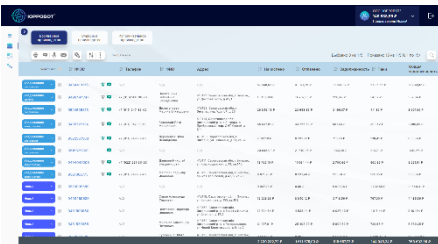
RoboClaim is a cloud platform for automating debt collection and analysis using machine learning and artificial intelligence. RoboClaim automates the work with accounts receivable for organizations, magistrature (justices of the peace), bailiffs/enforcement officers. With the help of machine learning and artificial intelligence, RoboClaim automatically processes legal documents, generates a complete package of documents for working with debtors, and sends it to the court online using an electronic digital signature (EDS). It automatically generates a draft judgment for a magistrate, as well as writs of execution, requests to the Federal Tax Service, and banks for bailiffs. At the moment we are at the stage of scaling the platform, expanding the geography of its sales in all regions of the Russian Federation. We are also adapting its functionality for selling on international markets.

PARTNERS AND CUSTOMERS: Gazprom, InterRAO, MOEK.

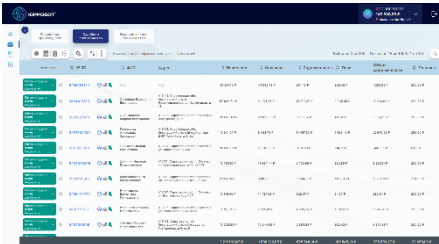
EXPORT GEOGRAPHY

Europe, USA, Asia

FITURED PRODUCTS



The module of pre-trial work with the debtor. The platform calculates debts, and penalties, sends SMS. The voice robot notifies the debtor of the first debt that has formed. The platform includes Email, instant messengers.



The module for working with a debtor in court. The platform calculates debts, penalties, state fees, determines the jurisdiction and details of the judicial district at the debtor's address, and submits a claim to the court online using an EDS (electronic digital signature)



Debtor executive work module. Formation of documents for working with the FBS (Federal Bailiff Service), the Federal Tax Service, and banks. Receiving automated answers on debt and its payment by debtors.

HEAD



VLADIMIR SHVETSOV

CEO

TYPE OF BUSINESS

Transport master planning, transport modelling, intelligent transport systems ITS, software development, software sales

CONTACT DETAILS

191014, Saint-Petersburg, Sapernyj pereulok, 5a
Phone: +7 (812) 702-13-35
E-mail: spb@simetrargroup.ru

POTENTIAL PARTNERS

Integrators, Transport consulting companies, City, Regional and Federal administrations, Traffic Management centers, Public transport operators

INTERNATIONAL BUSINESS MANAGER

CHRISTIAN BOETTGER
Global Sales Director
Phone: +7 (911) 182-79-74
E-mail: christian.boettger@simetrargroup.ru

KEY FACTS

SIMETRA, (LLC "A+C Transproekt") is a Russian IT company with headquarters in Saint Petersburg and a branch office in Moscow. Since its foundation in 2004, SIMETRA has been a constantly growing business in revenue and personnel. The revenue for 2020 was 4 mln. € and the company staff exceeded 50 employees, including 20 engineers and 20 programmers. There are 4 certified trainers for PTV transport modeling products in our team. SIMETRA is owned by its CEO Vladimir Shvetsov.

GENERAL INFORMATION

SIMETRA is the leading expert in the field of traffic flow modeling and transport planning. We are proficient in modeling traffic and pedestrian flows, developing Sustainable Urban Mobility Plans, public transport network planning, and toll roads' traffic forecasts, employing our deeply integrated vision of both engineering and economic aspects.

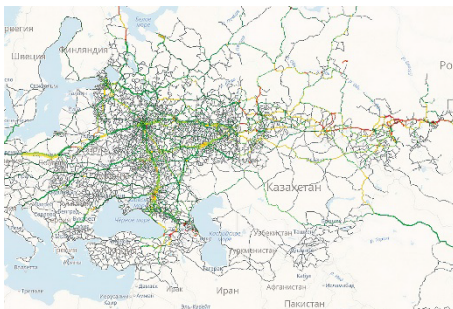
Besides developing meant above projects, we produce and evolve our dedicated digital solutions for the strategic and operational management of transport systems - RITM³. As the official partner of PTV Group, Schlothauer&Wauer, TomTom, and Optibus, we distribute and localize the most advanced software for the development of transport systems solutions in traffic light management and traffic management.

Among others projects, SIMETRA has developed one of the biggest macroscopic freight and passenger demand transport model in the world for the Ministry of Transport of the Russian Federation; has installed a real-time traffic flow forecasting system for the traffic management center of Moscow based on RITM³, has prepared more than 20 feasibility studies for toll roads in Russia, has taken part in the update of the Dubai Strategic Transport Model and Qatar Strategic Transport Model, has created microscopic simulations of pedestrian flows for Astana World Expo 2017 and Olympic Winter Games 2014 in Sochi as well as has developed intermodal sustainable transport mobility plans for several metropolitan areas like Almaty, Chelyabinsk and Rostov-on-Don.

EXPORT GEOGRAPHY

CIS, EU, Middle East, Africa, Southeast Asia

FEATURED PRODUCTS



Macroscopic transport modelling of cities, regions and countries



Feasibility studies for public transport and toll roads



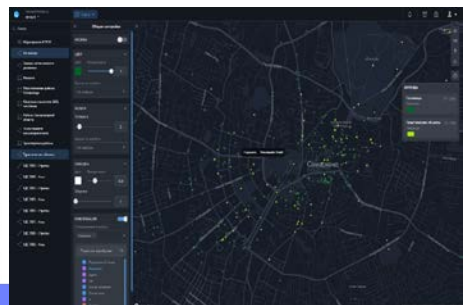
Modelling of pedestrian flows



Online traffic management and adaptive traffic light control RITM³



Development of Sustainable Urban Mobility Plans



Online transport master plan RITM³

HEAD



Farid
Nigmatullin
CEO

TYPE OF BUSINESS
Video Analytics
Artificial intelligence
Big data analysis
Machine Learning
Industrial VCA

CONTACT DETAILS
620075, Yekaterinburg,
Gorky Street, No. 63, Office 801
Tel.: +7 (343) 204-73-30,
E-mail: vmx@videomatrix.ru

POTENTIAL PARTNERS
Mining and processing plants
Petrochemical industry
Oil and gas enterprises
Metallurgical enterprises
Agro-industrial companies
Printing companies, Banks

INTERNATIONAL BUSINESS MANAGER
Anna
Lapshina
+7 951 936-999-3
lav@videomatrix.ru

KEY FACTS

The company develops its own software for industrial video analytics based on artificial intelligence and machine vision. Products of the Vmx product line, in particular, allow to automate quality control of a product, technological process, equipment condition, and employee work.

Institutional-legal form: limited liability company
Year of foundation: 2014
Number of Employees: 24 employees (as of 2021)
Number of successfully completed projects: 35+
Years of experience with images (inc. years before Videomatrix brand foundation): 25

GENERAL INFORMATION

Since our foundation in 2014, our mission is to improve the industrial quality control with advanced technology. As a Russian experienced software developer for automation of production control, we provide a wide range of solutions: from product surface quality control to reading railroad markings, from geometry control to pigs inventory for slaughter, from manual control to PPE control and compliance with industrial safety rules by employees.

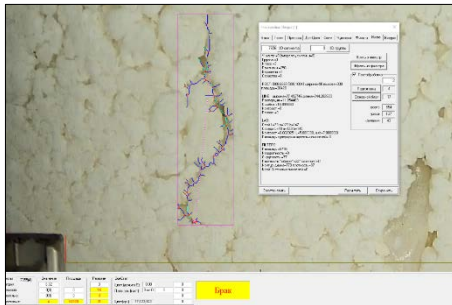
We specialize in complex tasks. We are distinguished by the high accuracy of systems operation due to a hybrid combination of neural networks and mathematical algorithms on server-side video analytics
TECHNOLOGICAL EXPERTISE OF THE COMPANY Development of AI and CV-driven software for industrial video analytics, expertise in the selection of equipment for video analytics systems of various tasks, experience in creating software and hardware systems for quality control, to create a new generation of globally competitive products and video analytics tools for industrial enterprises.

REALIZED PROJECTS The company has successfully implemented dozens of projects for government and commercial structures in Russia and the CIS, including at metallurgical and petrochemical enterprises, in the agro-industrial complex, in enterprises of state quality control and acceptance, for international sports events

PARTNERS AND CUSTOMERS Severstal's enterprises, PJSC "Nizhnekamskneftekhim", ROS AGRO PLS, NLMK (Novolipetsk steel), Arcelor Mittal, SIBUR, RT-Techpriemka (Rostec), and etc.

EXPORT GEOGRAPHY
CIS, Europe

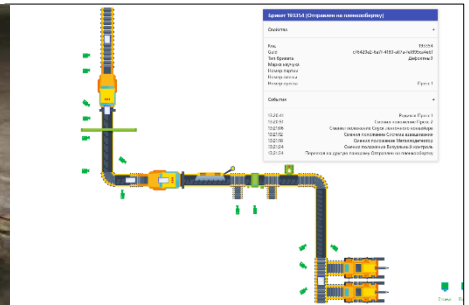
FITURED PRODUCTS



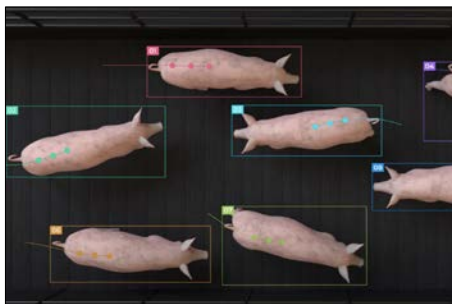
Vmx Dequs: the System can detect minor defects even on complex, highly textured surface. Here is the example - briquette of complex-texture rubber and skeletonization of defect for the best accuracy



Vmx Dequs: AWSIS (automated workstation for inspection of steel sheets) employs artificial intelligence and algorithms for high-precision control of steel at a stand-alone unit. The innovative technology was developed specifically for Rostec



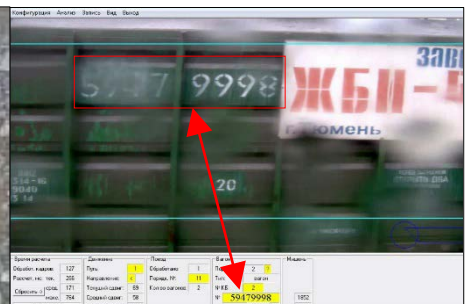
Vmx Qualex: Track - The system of automated product tracking and tracing throughout its lifecycle on the belt line, record-keeping of events at different time and stages for further automatic preparation of a product quality certificate



Vmx SILA: the system does automatic livestock pigs inventory upon livestock's arrival at the meat processing plant when running them through a corridor. Accuracy is up to 99,9%



Vmx SILA: automatic monitoring of compliance with health, safety and environment requirements. Example of PPE compliance analysis: a hard hat (absent on the person on the left) and a vest



Vmx MarkerID: recognition of numbers, cards and barcodes with accuracy up to 98%. Here is the example of automatic railcar number recognition in challenging conditions (rainfall)

HEAD



*Denis
Zakharkin*

CEO and Founder

TYPE OF BUSINESS

*VR/AR
Mechanical engineering
Construction
Education*

CONTACT DETAILS

*Moscow, Innovation Center Skolkovo, st. Nobelya, 7
floor
+7 (495) 212-11-47
info@vrconcept.net*

POTENTIAL PARTNERS

*VR/AR
Mechanical engineering
Construction
Education*

INTERNATIONAL BUSINESS MANAGER

*Nikolaenko
Kristina
Marketing Manager
+33 7-73-27-80-27*

KEY FACTS

VR Concept is a universal platform for your engineering project in VR allowing you to reduce the time for 3D documentation analysis in half and identify 30% more critical errors, saving up to 30% on the design and implementation budget.

Institutional-legal form: LLC
Year of foundation: 2014
Number of Employees: 20 employees

GENERAL INFORMATION

VR Concept is a Russian software environment for collaborative work in VR with digital product models in CAD formats.

Key technological competencies – The VR Concept solution allows to:

- Accelerate the coordination of projects between decision makers, project manager, designers, contractors, partners and customers;
- Improve the ergonomic characteristics of the designed object;
- Reduce the number and cost of errors in the project;
- Increase the effectiveness of employee training in production; Reduce the risk of emergencies.

REALIZED PROJECTS – Gazprom Neft, Sinara-Transport Machines, BSTU named after V.G.Shukhova, Kirovsky Zavod, Morinformsystem-Agat, Moscow State University of Civil Engineering, Tomsk Polytechnic University, MEPhI, and etc.

PARTNERS AND CUSTOMERS – HTC, Autodesk, Croc, NanoCad, Nvidia, Skolkovo, Kirovsky Zavod, Generation S, FASIE, C3D Labs.

TECHNOLOGICAL EXPERTISE OF THE COMPANY – VR Concept is designed on its self-developed engine, whose power allows to work with large 3D models, and also makes the solution independent..

EXPORT GEOGRAPHY

CIS countries, Europe, Asia

FITURED PRODUCTS



Construction

Gazprom Neft

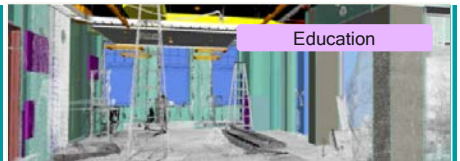
Accommodation of internal digitalization transformation and implementation of VR



Machinery

Sinara-Transport Machines

Optimization of the locomotive design process



Education

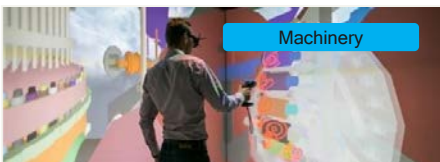
BSTU named after V.G.Shukhov

Training students to become highly-qualified BIM specialists

Start in 2 minutes!

1:1 scale virtual mock-up

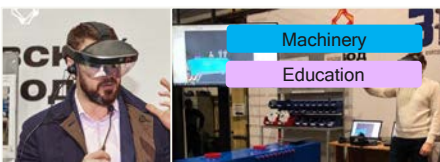
Import CAD and BIM



Machinery

SSTC

Reducing the cost of coordinating projects based on natural prototypes



Machinery

Education

Kirovsky Zavod

Locksmith Assistant for mounting and dismantling the oil tank in AR



Machinery

Morinformsystem-Agat

Demonstration of large and heavy products at the exhibition

Collaboration via any channels

Wide functionality in VR

Codeless!



<https://russoft.org/en/>